





KEY

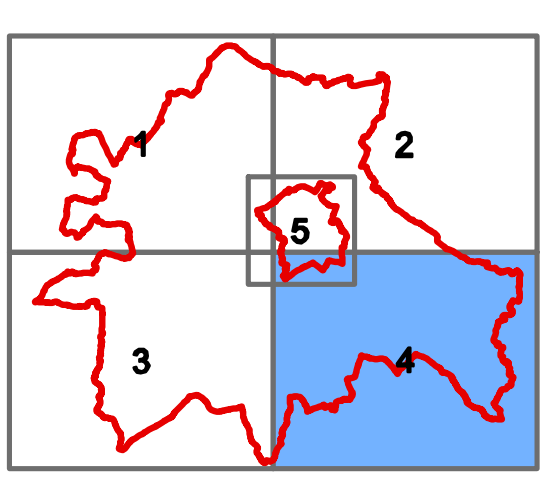

-  South Cambridgeshire DC & Cambridge City Council Boundaries
-  Low Potential for Infiltration
-  Uncertain Potential for Infiltration
-  High Potential for Infiltration

NOTES

1. This drawing looks at the infiltration potential within the South Cambridgeshire and Cambridge City Boundaries. SuDS hierarchy must be applied to all potential developments. Intrusive ground investigations to determine the viability of infiltration must still be undertaken as part of a site specific FRA. Should infiltration devices prove to be unviable based on intrusive ground investigations and BRE 365 Soakage Tests then alternative SuDS should be used.

2. In areas with potential infiltration, reference should be made to the location of the various Source Protection Zones, as shown in Appendix C.
3. This plan has been produced using information transcribed from the British Geological Survey; Solid and Drift Editions 204, 205, 206, 187, 188, and 189.
4. This plan should be read in conjunction with Section 8 of the Cambridge City and South Cambridgeshire SFRA.

Reproduced from Ordnance Survey data by permission of the Controller of Her Majesty's Stationary Office. © Crown copyright (2008). All rights reserved. License No. 0100022500. © 2008 NAVTEC

TITLE:
SOUTH CAMBRIDGESHIRE DC
AND CAMBRIDGE CITY COUNCIL
LEVEL 1 SFRA

FIGURE No:
SUDS INFILTRATION FEASIBILITY PLAN
1402 - C - 2.4